

Technical Specifications

Engineered for construction.

Built for the demands of today's jobsites, Kin delivers unmatched performance, durability, and reliability—globally certified to perform in extreme conditions.

Environmental

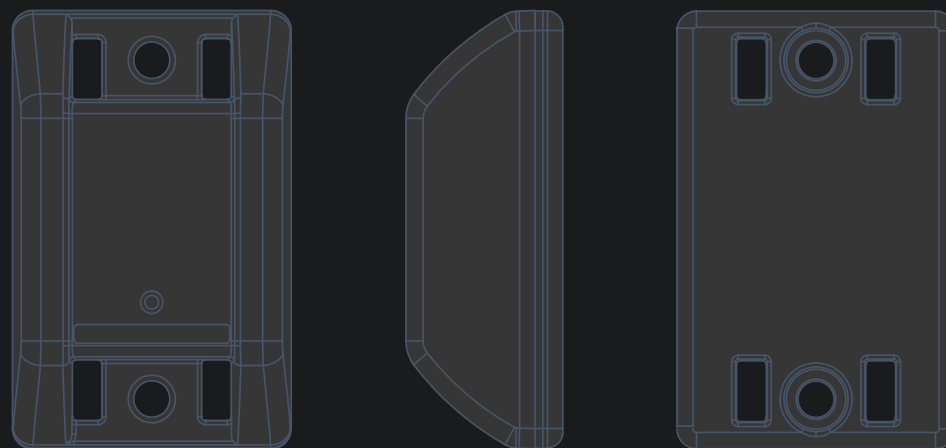
- IEC 60529
- IEC 60068-2-1:2007
- IEC 60068-2-2:2007
- IEC 60068-2-78:2001-08
- IEC 60068-2-14

IP Class

- IP66
- IP67
- IP69

Certification

- CE
- FCC
- ISED



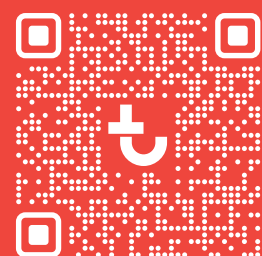
Product Webpage

Want to learn more?

trackunit.com/trackunit-kin
info@trackunit.com

Copyright © 2025 Trackunit.
All rights reserved.

EN_10_25



Award-Winning

Recognized by the industry

Industry awards highlight Kin's role in enabling smarter, more connected jobsites, to deliver measurable impact in construction.



**Rental Equipment Register:
Technology Enhancement**



**Rental Awards:
Editor's Choice**



Track every tool. Unify every jobsite.



Trackunit Kin

Kin T200 is the next-generation rugged Bluetooth® tracking tag built for construction. Get instant, plug-and-play visibility of tools, attachments, and non-powered equipment through the Trackunit network.

Trackunit Kin

The tag for everyone who builds

Whether you build, rent, or manufacture, Kin delivers visibility to equipment that's always been hard to manage making it simple to bring new insights into the stakeholder ecosystem.

Contractors

See more. Lose less. Build faster.

Leverage location and utilization insights across large jobsites to reduce downtime, prevent loss, and boost crew productivity.

Rental Companies

Automate operations, reduce costs.

Streamline and verify asset returns, automate inventory management while reducing costs and manual labour with digital-driven operations.

OEMs

Add value with digital visibility.

Build loyalty-based revenue by offering factory-embedded connectivity to help your customers simplify mixed-fleet management.

More Than a Tracker

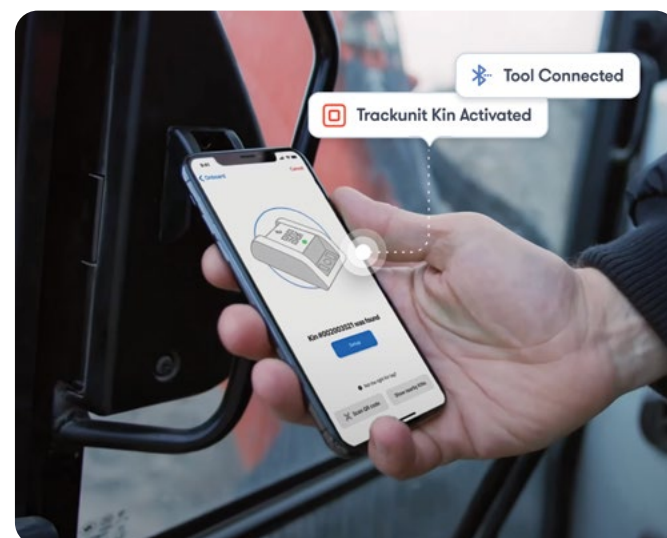
Advanced intelligence, ready to unlock.

Go beyond basic tracking to capture real-world insights into how equipment is being used, so you can make smarter decisions that protect asset value and uptime.

Get Started

Tag it, track it, done.

No power, no pairing, no infrastructure required. Kin is jobsite-ready in minutes, right out of the box.



Use Cases

Real challenges. Real results.

Kin solves the everyday pain points of site operations by saving time, cutting costs, minimizing downtime, and helping crews keep work moving.



Real-Time location tracking

Instantly find tools and equipment across any site or yard.



Operator self-serve tool locating

Let your crew find what they need without calls or delays.



Geo/motion alerts

Get notified when assets move off-site or after hours.



Lost or misplaced attachments

Track buckets, forks, and other costly accessories easily.



Cycle count automation

Eliminate manual inventory checks at branches or storage yards.



Underused asset identification

Stop hoarding. Optimize tool and attachment use.



Job box & trailer awareness

Start each day with the right tools, in the right place, ready to get to work.



Drop-off & pickup confirmation

Know what arrived and what didn't return from any jobsite.



Precise retrieval for off-rent pickup

Help rental drivers locate gear fast and close contracts faster.