

# Find the **accessories** you're looking for.



## Raw Shield Mount

Made to protect Raw in harsh environments, adding an extra layer of protection.



# Trackunit **Kin** Installation Guide



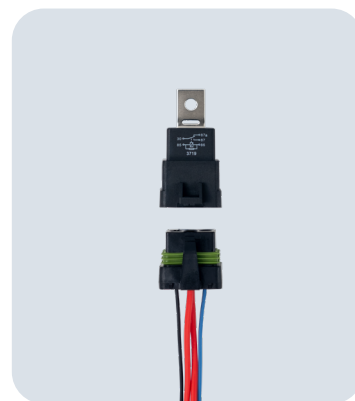
## RFID Card Reader

USB RFID card reader is a easy tool to activate DualID RFID card access for operators.



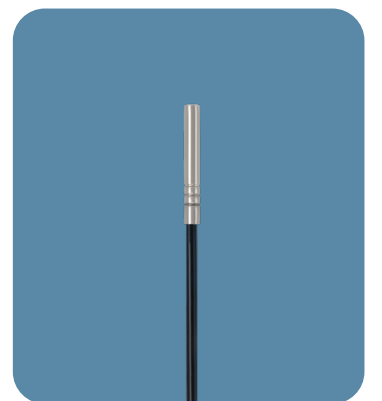
## DualID Cards

The DualID RFID card is an easy way to control access to your equipment.



## Splash Proof Relay

Used when required, to interface Trackunit Raw to specific machine wiring signals or controls.



## Temperature Sensor

Connect to Raw to measure temperature conditions in your environment.



## Ferrite

Designed and certified for use in Japan with TU-501 and TU600-x models.



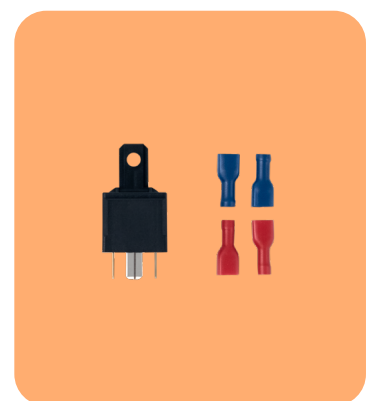
## Power Cable

Versatile solutions to connect Trackunit Raw to any type of machine.



## DualID II Bracket

Made to protect DualID II in harsh environments, adding an extra layer of protection.



## Standard Relays

Used when required, to interface Trackunit Raw to specific machine wiring signals or controls.

**Help** is here. Whenever and however you need it.



## Help Center

Installation, activation, and onboarding info can be found at [helpcenter.trackunit.com](https://helpcenter.trackunit.com)



## Customer Success

Please reach out to our experienced support team at [support@trackunit.com](mailto:support@trackunit.com)



## Order

Already know what you need? Place your order at [trackunit.com](https://trackunit.com)

# Trackunit Kin Taking Tags to the Next Level



## 400m Range

Your assets are allowed within reach with Kin's leading line of sight.



## C1D1 Certified

Our KinEx variant was designed to safely track tagged assets in hazardous environments



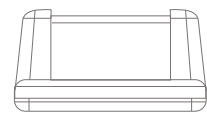
## IP66 & IP69

Kin is durable and built for rough construction environments with IP66 and IP69 classifications.

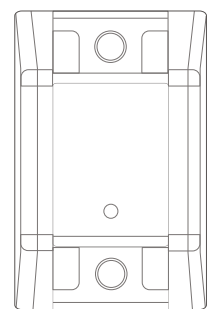
## Product Diagram

W = 35 mm / 1.3 inches

H = 19.7 mm / 0.77 inches



L = 54.5 mm / 2.1 inches



## Overview

Trackunit Kin, the circle of connectivity, is closing in by adding attachments, unpowered equipment, and tools to the loop.

## Dimensions

- Length: 54.5 mm (2.1")
- Width: 35 mm (1.3")
- Height: 19.7 mm (0.77")
- Weight: 25g (0.88 oz)

## Tech Specs

- Approvals: CE, FCC/IC, Bluetooth SIG
- Battery: CR2477 Lithium Manganese Oxide (LiMnO2)
- Capacity: 5 Years of Normal Operation
- Temperature: - 40°C to + 70°C (- 40F to + 158F)
- 3 Axis Accelerometer
- Passive Vibration Sensor
- Antenna
- TX Power: Max 10 dBm
- Frequency: 2402 MHz - 2480 MHz

## Included

- Kin
- Installation & Safety Guides

## Compatible With



Raw

# Installation How to Install Kin

## 1. Mounting

Install Kin using either glue, screws or cable ties.

**Note:** Avoid mounting the device inside or close to signal-blocking material (e.g., metal).



### Glue Mounting

Glue Type: Single component MS-Polymer adhesive (Winshield Adhesive)



### Screw Mounting

- Mounting Hole: 4.6mm (0.18")
- Screw Type: Self-tapping screw 4.2mm (0.16")



### Cable Tie Mounting

Cable Tie Type: Stainless steel or strong nylon cable ties width 4.8mm (0.18").

## 2. Activation

Remove the activation sticker from the front of your Kin and expose it to direct light to trigger device activation. Activate your Kin after installation or after the onboarding process.

**Note:** Kin needs to be activated in order to transmit data.



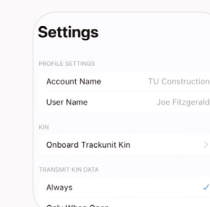
### Steps

- Remove the activation sticker.
- The LED indicator on the front of Kin will flash green for five seconds, indicating the device is active.

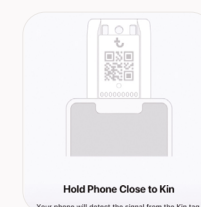
**Note:** During the activation process, it can take up to 3 seconds for the LED Indicator on Kin to start flashing.

## 3. Onboarding

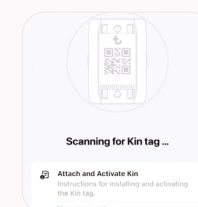
To onboard Kin, download the Trackunit Go app from the App Store or Google Play and open the app.



Go to **Settings** and select the **Onboard Trackunit Kin** link.

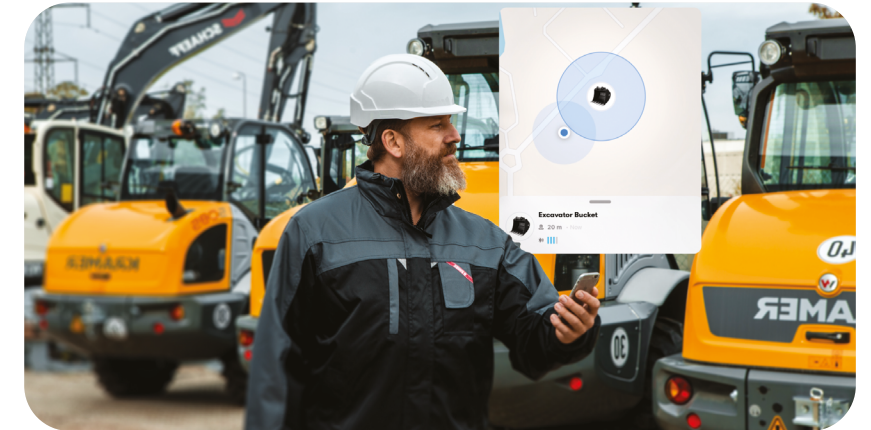


Hold your mobile device close to your Kin or scan the QR code.



When Kin is detected, select the **Set Up** link. Fill out all Asset details, add an image of the Asset and select the **Done** button.

# Trackunit Kin How to Use Kin



Keep an eye on your assets and track activity via movement and vibration with Trackunit Kin.

**30%**

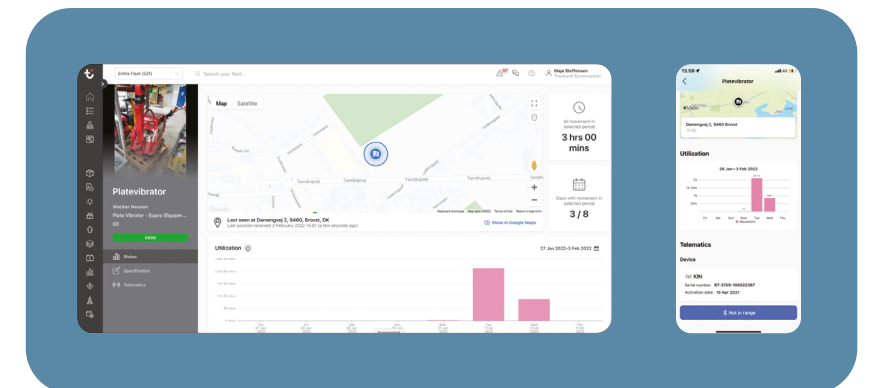
30% of total annual tool purchases are due to theft, loss, and damages.

**10%**

An average worker spends 10% of their workday searching for tools and attachments.

**21%**

In 2016, only 21% of all stolen or lost equipment was recovered.



Access telematics data for your device using Trackunit Go or Manager.

# Help is here, whenever you need it.



## Help Center

Installation, activation, and onboarding info can be found at [helpcenter@trackunit.com](mailto:helpcenter@trackunit.com)



## Customer Success

Please reach out to our experienced support team at [support@trackunit.com](mailto:support@trackunit.com)



## Order

Already know what you need? Place your order at [trackunit.com](mailto:trackunit.com)