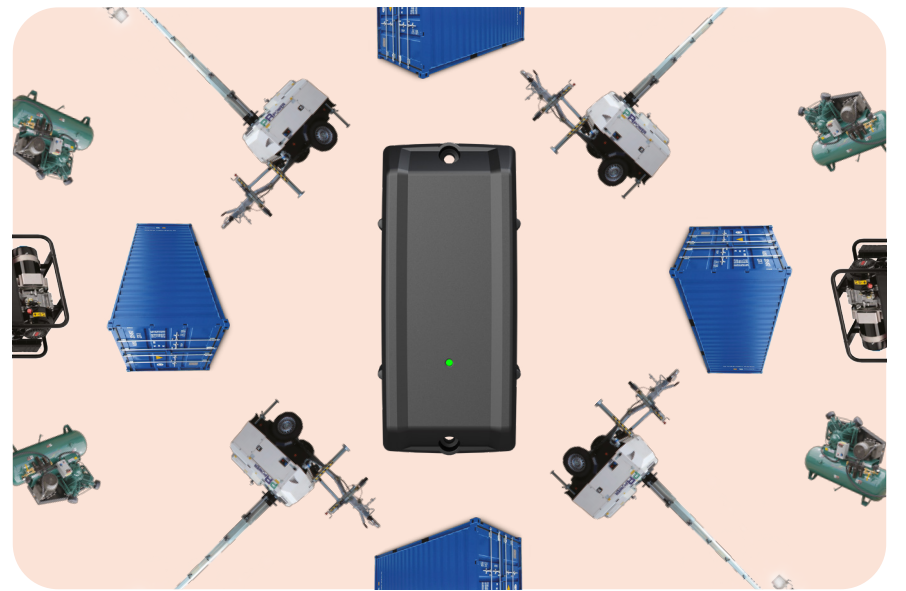


Find the **accessories** you're looking for.



Raw Shield Mount

Made to protect Raw in harsh environments, adding an extra layer of protection.



Trackunit **Spot** Installation Guide



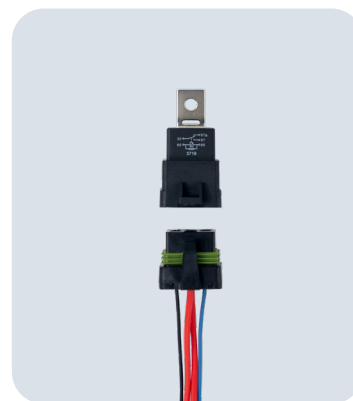
RFID Card Reader

USB RFID card reader is a easy tool to activate DualID RFID card access for operators.



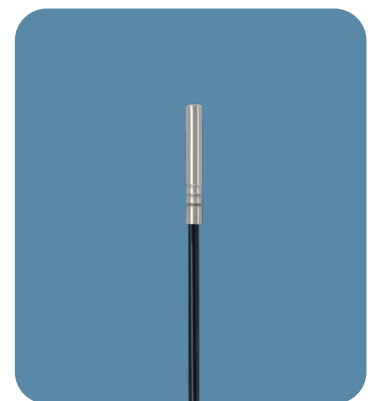
DualID Cards

The DualID RFID card is an easy way to control access to your equipment.



Splash Proof Relay

Used when required, to interface Trackunit Raw to specific machine wiring signals or controls.



Temperature Sensor

Connect to Raw to measure temperature conditions in your environment.



Ferrite

Designed and certified for use in Japan with TU-501 and TU600-x models.



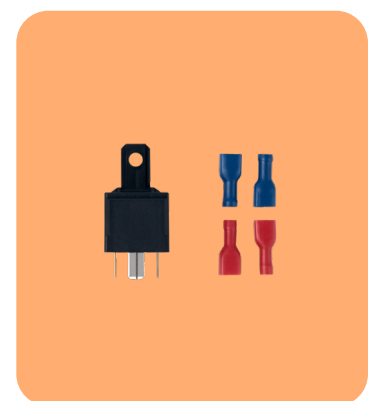
Power Cable

Versatile solutions to connect Trackunit Raw to any type of machine.



DualID II Bracket

Made to protect DualID II in harsh environments, adding an extra layer of protection.



Standard Relays

Used when required, to interface Trackunit Raw to specific machine wiring signals or controls.

Help is here. Whenever and however you need it.



Help Center

Installation, activation, and onboarding info can be found at helpcenter.trackunit.com



Customer Success

Please reach out to our experienced support team at support@trackunit.com



Order

Already know what you need? Place your order at trackunit.com

Trackunit Spot Empowering Non-Powered Equipment



One Platform

Add attachments and unpowered equipment to the same platform.



One View

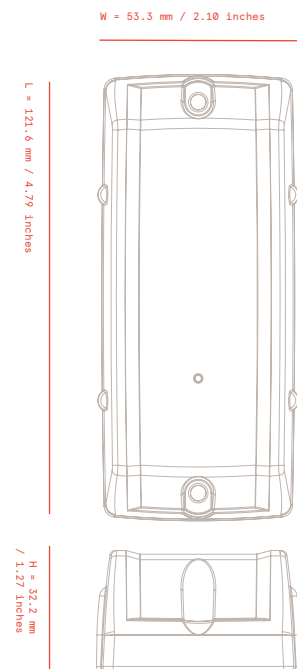
Track your equipment and attachments alongside the rest of your fleet.



One Minute

On-site installation takes only one minute.

Product Information



Overview

Trackunit Spot is a battery-powered telematics solution that provides performance, durability, and flexibility to manage your fleet of non-powered assets, machines, or equipment.

Dimensions

- Length: 121.6 mm (4.79")
- Width: 53.3 mm (2.10")
- Height: 32.2 mm (1.27")
- Weight: 150g (5.3 oz)

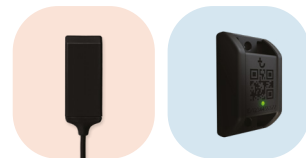
Tech Specs

- Network: LTE-M1 / NB-IoT
- Approvals: CE, FCC/IC, and PTCRB
- GNSS: GPS, GLONASS, BeiDou, Galileo, and QZSS
- Battery: 3.6V / 2 x 3.6Ah
- Capacity: 4000 pings
- Temperature: -30°C to +60°C (-22°F to +140°F)
- Environmental Class: IP66K, IP69K, and UL94-V0
- 3 Axis Accelerometer

Included

- Spot 2
- 2x M4 (5/32") Screws
- User Guide

Compatible With



Raw

Kin

Installation How to Install Spot

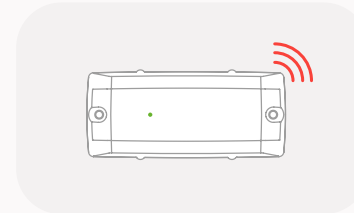
1. Mounting Orientation

To get the most optimal performance out of Spot:



Vertical Mounting

Mount Spot upright with the Antenna facing the sky. The LED on the front will be on the bottom of the device.

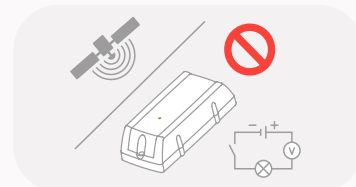


Horizontal Mounting

Mount Spot horizontally with the Antenna facing the sky. The LED on the front will be on the bottom of the device.

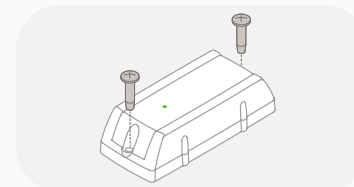
2. Mounting

Install Spot by inserting the two M4 (5/32") screws through the Mounting Holes and into the Mounting Surface. Use a TX20 (0.6 Nm) screwdriver to tighten the M4 screws; be careful not to overtighten.



Mounting Location

Avoid mounting Spot under metal objects or next to electrical wiring.



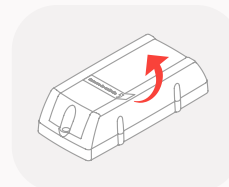
Screw Mounting

- Mounting Hole: 4 mm (0.15")
- Screw Type: M4 (5/32") Screws

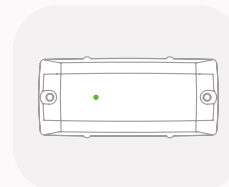
3. Activation

Remove the activation sticker from the front of Spot and expose it to direct light to trigger device activation. Activate the Spot after installation or after the onboarding process.

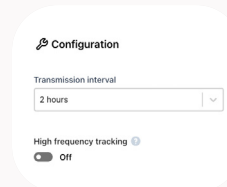
Note: You need to activate Spot before it transmits data.



Remove the activation sticker covering the light sensor.



The LED indicator on the front of Spot will flash green, indicating the device is active.



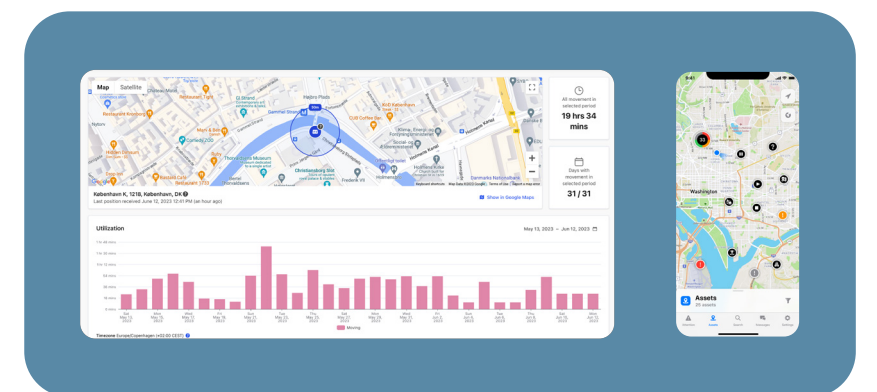
Use Trackunit Manager to configure how often Spot transmits an updated location (default is one time per day)

Note: During the activation process, it can take up to 3 seconds for the LED Indicator on the Spot to start flashing.

Trackunit Spot How to Use Spot



Meet Trackunit Spot, a battery-powered telematics device that tracks your equipment.



Equipment can be located by setting up detection intervals. Track 1,2,3 or 4 times per day or even every second day - the choice is yours.



When movement detection is enabled, Trackunit Spot will transmit data if movement is detected and will keep doing so every hour until your asset is at a standstill.



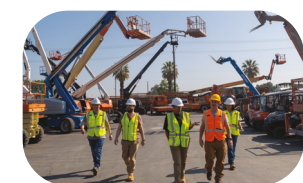
By combining location data and utilization data, you can see where your equipment is located and when it's being used.

Help is here, whenever you need it.



Help Center

Installation, activation, and onboarding info can be found at helpcenter.trackunit.com



Customer Success

Please reach out to our experienced support team at support@trackunit.com



Order

Already know what you need? Place your order at trackunit.com