

Find the accessories you're looking for.



TU700 Shield Mount
Made to protect Raw in harsh environments, adding an extra layer of protection.



Trackunit Kin Installation Guide



RFID Card Reader
USB RFID card reader is an easy tool to activate DualID RFID card access for operators.



DualID Cards
The DualID RFID card is an easy way to control access to your equipment.



Splash Proof Relay
Used when required, to interface Trackunit Raw to specific machine wiring signals or controls.



Temperature Sensor
Connect to Raw to measure temperature conditions in your environment.



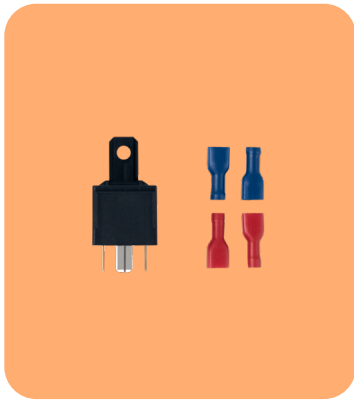
Ferrite
Designed and certified for use in Japan with TU-501, TU600-x and TU700-x models.



Power Cable
Versatile solutions to connect Trackunit Raw to any type of machine.



DualID II Bracket
Made to protect DualID II in harsh environments, adding an extra layer of protection.



Standard Relays
Used when required, to interface Trackunit Raw to specific machine wiring signals or controls.

Help is here. Whenever and however you need it.



Help Center
Installation, activation, and onboarding info can be found at help.trackunit.com



Customer Success
Please reach out to our experienced support team at support@trackunit.com



Order
Already know what you need? Place your order at trackunit.com

Trackunit Kin Taking Tags to the Next Level



400m Range

With Kin's leading line of sight range, your assets are always within reach.



IP66, IP67 & IP69

Kin is durable and built for rough construction environments with IP66, IP67 and IP69 classifications.

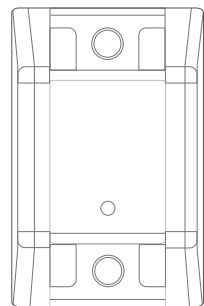
Product Diagram

W = 35 mm / 1.3 inches

H = 19.7 mm / 0.77 inches



L = 54.5 mm / 2.1 inches



Overview

Trackunit Kin, the circle of connectivity, is closing in by adding attachments, unpowered equipment, and tools to the loop.

Dimensions

- Length: 54.5 mm [2.1"]
- Width: 35 mm [1.3"]
- Height: 19.7 mm [0.77"]
- Weight: 32.3g (1.14 oz)

Tech Specs

- Approvals: CE, FCC/IC
- Qualified by Bluetooth® SIG
- Battery: CR2477 Lithium Manganese Oxide (LiMnO₂)
- Capacity: 5 Years of Normal Operation
- Temperature: - 30°C to + 70°C (- 22F to + 158F)
- 3 Axis Accelerometer
- Vibration (up to 35g)
- Temperature sensor
- Antenna
- TX Power: Max 10 dBm
- Frequency: 2402 MHz - 2480 MHz

Included

- Kin
- Installation & Safety Guides

Compatible With



Raw



Beam Gateway

Installation How to Install Kin

1. Mounting

Install Kin using either glue, screws or cable ties.

Note: Avoid mounting the device inside or close to signal-blocking material (e.g., metal).



Glue Mounting

Glue Type: Single component MS-Polymer adhesive (Wind-shield Adhesive)



Screw Mounting

- Mounting Hole: 4.6mm [0.18"]
- Screw Type: Self-tapping screw 4.2mm [0.16"]



Cable Tie Mounting

Cable Tie Type: Stainless steel or strong nylon cable ties width 4.8mm [0.18"].

2. Activation



Remove the activation sticker from the front of your Kin and expose it to direct light to trigger device activation. Activate your Kin after installation or after the onboarding process.

Note: Kin needs to be activated in order to transmit data.

Steps

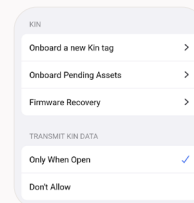
- Remove the activation sticker.
- The LED indicator on the front of Kin will flash green for five seconds, indicating the device is active.

Note: During the activation process, it can take up to 3 seconds for the LED Indicator on Kin to start flashing.

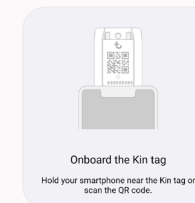
Note: The LED indicator on the front of Kin will flash red every 9 seconds when battery is low.

3. Onboarding

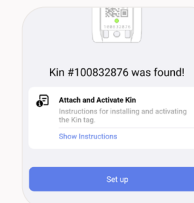
To onboard Kin, download the Trackunit Go app from the App Store or Google Play and open the app.



Go to **Settings** and select **Onboard a new Kin tag**.



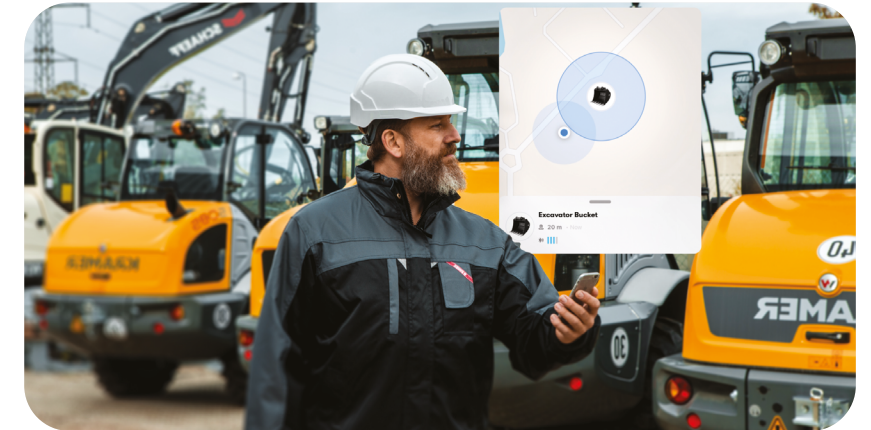
Hold your mobile device close to your Kin or scan the QR code. The LED indicator on the Kin will flash green, indicating the device is detected.



When Kin is detected, select **Set up**. Fill out all Asset details, add an image of the Asset and select the **Done** button.

Fast Onboarding is available on **Trackunit Manager**, recommended when onboarding more than 10 Kins. Use the **Help Center Article** "How do I install, activate, onboard, and recover Trackunit Kin/KinEx tags?"

Trackunit Kin How to Use Kin



Keep an eye on your assets and track activity via movement and vibration with Trackunit Kin.

30%

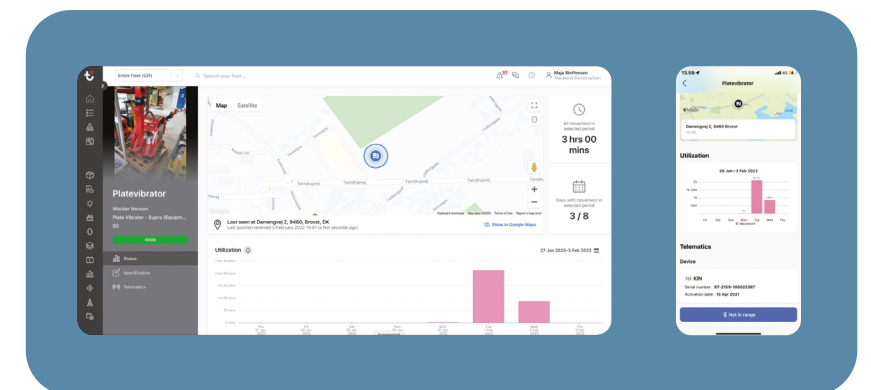
30% of total annual tool purchases are due to theft, loss, and damages.

10%

An average worker spends 10% of their workday searching for tools and attachments.

21%

In 2016, only 21% of all stolen or lost equipment was recovered.



Access telematics data for your device using Trackunit Go or Manager.

Help is here, whenever you need it.



Help Center

Installation, activation, and onboarding info can be found at help.trackunit.com



Customer Success

Please reach out to our experienced support team at support@trackunit.com



Order

Already know what you need? Place your order at trackunit.com