

Find the **accessories** you're looking for.



TU700 Shield Mount

Made to protect Raw in harsh environments, adding an extra layer of protection.



Trackunit **Beam** Installation Guide



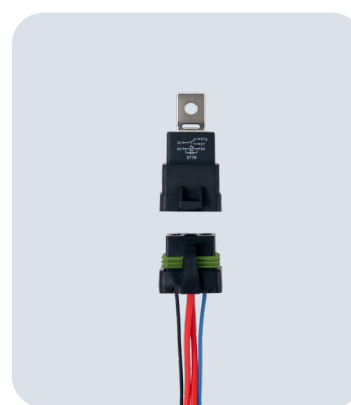
RFID Card Reader

USB RFID card reader is a easy tool to activate K300 RFID card and DualID RFID card access for operators.



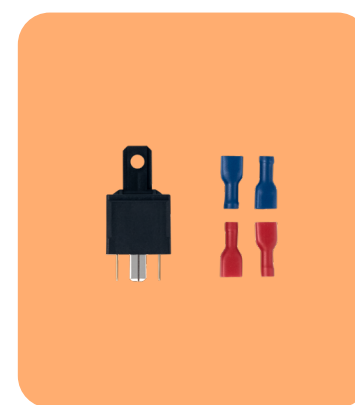
Trackunit RFID Cards

The RFID card is an easy way to control access to your equipment through the K300 or DualID.



Splash Proof Relay

Used when required, to interface Trackunit Raw to specific machine wiring signals or controls.



Standard Relays

Used when required, to interface Trackunit Raw to specific machine wiring signals or controls.



Ferrite

Designed and certified for use in Japan with and TU600 and TU700 models.



Power Cable

Versatile solutions to connect Trackunit Raw to any type of machine.



Keypad Bracket

Made to protect the K300 and DualID II in harsh environments by adding an extra layer of protection.

Help is here. Whenever and however you need it.



Help Center

Installation, activation, and onboarding info can be found at help.trackunit.com



Customer Success

Please reach out to our experienced support team at support@trackunit.com



Order

Already know what you need? Place your order at trackunit.com

Trackunit GW200

The Bluetooth[®] Site Manager



Up to 400m Range

Your assets are always within reach of the GW200's long range.



Easy to Install

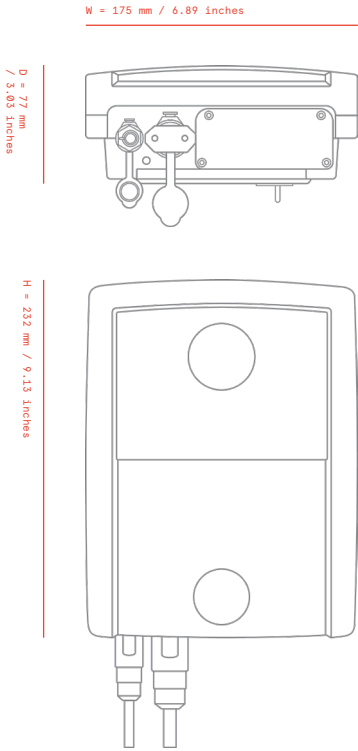
End-to-end installation validation via Trackunit Verify.



Wi-Fi[®]

Seamlessly connect to networks for instant data transfer and access to cloud-based services.

Product Diagram



Overview

Trackunit GW200 is a gateway that can connect all Bluetooth functionality and bring on-site tools into the IoT ecosystem.

Product Dimensions

- Height: 232 mm (9.13")
- Width: 175 mm (6.89")
- Depth: 77 mm (3.03") [with Mounting Plate]
- Weight: 1100 g (excluding battery)
- Battery: 585 g

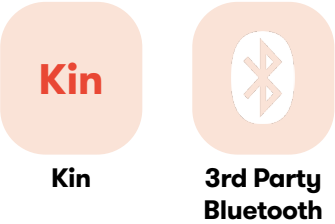
Tech Specs

- Network: LTE-M, NB-IoT w/ 2G GSM
- Certification: CE
- GPS: GLONASS, BeiDou, Galileo, QZSS
- AC Supply Voltage: 110V / 230V (50/60 Hz)
- DC Supply Voltage: 12 V +/-10%
- Battery Output: 10.8V, 7.8Ah, 84Wh
- Operating Temp.: -20°C to +60°C/-4°F to +140°F
- Charging Temp.: -20°C to +40°C/-4°F to +104°F
- Storage Temp.: 0°C to 25°C for best battery life
- Environmental Class: IP65
- Bluetooth 5.0 with Low Energy
- Wi-Fi wireless network

Included

- Trackunit GW200
- Battery
- Mounting Kit
- Mains Cable (3 m)
- Installation & Safety Guide

Compatible With

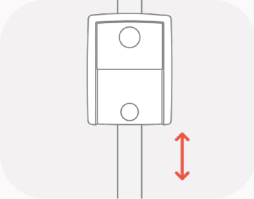


Installation

How to install Beam

1. Location

The GW200 can be powered using either 115/230 Vac or by external battery power (12 Vdc).



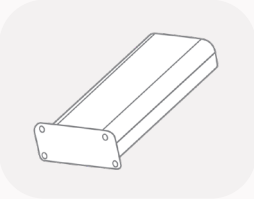
Mounting Location

Mount the bracket high up in a central location to utilize the GW200's large range of up to 400 m. Place Beam with the serial number facing outwards, so you do not obstruct the LED indicator on the bottom.



115/230 Vac Power Cable

The GW200 comes with a 3m long mains cable, so the mounting location should be within 3m of a power supply outlet, but less than 2m above the ground.

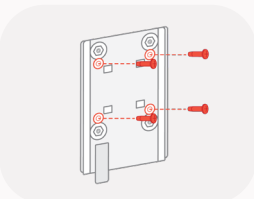


Battery

The Trackunit GW200 has an internal battery to allow for use in isolated construction zones. The GW200 has up to 10 days of operation time on an average number of pings with no external power present.

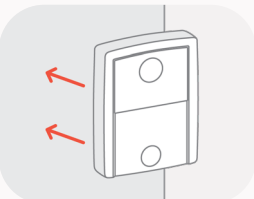
2. Mounting the Bracket

There are 3 different ways to mount the Trackunit GW200



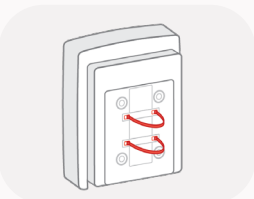
Screws

There are 4 mounting screw holes in the back of the bracket to allow the Trackunit GW200 to be screwed onto a wall. Minimum screw length 16 mm.



Magnet

Install the Trackunit GW200 Bracket on any magnetic surface and the powerful magnets will hold firm, even in harsh weather and rain.

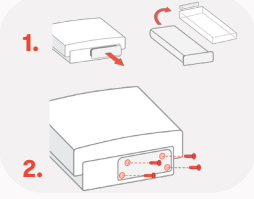


Zip-tie

The Trackunit GW200 Bracket includes sections that allow for zip-ties to easily be threaded through to allow for further mounting if no metal surface is usable.

3. Activating the GW200

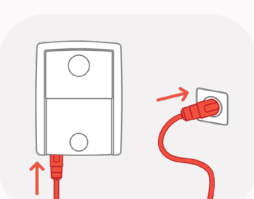
The GW200 will activate on initial power on.



Connecting the Battery

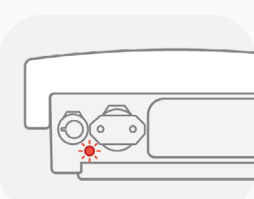
The GW200 battery pack needs to be connected.

1. Remove and discard the battery packaging (bag and foam piece).
2. Insert the battery pack fully, and install the supplied 4 screws.



Connecting the Cable

Using the 3 meter cable included, plug the Trackunit GW200 into a mains power supply outlet. Alternatively, use the 12Vdc accessory cable (not included) to connect to an external battery.

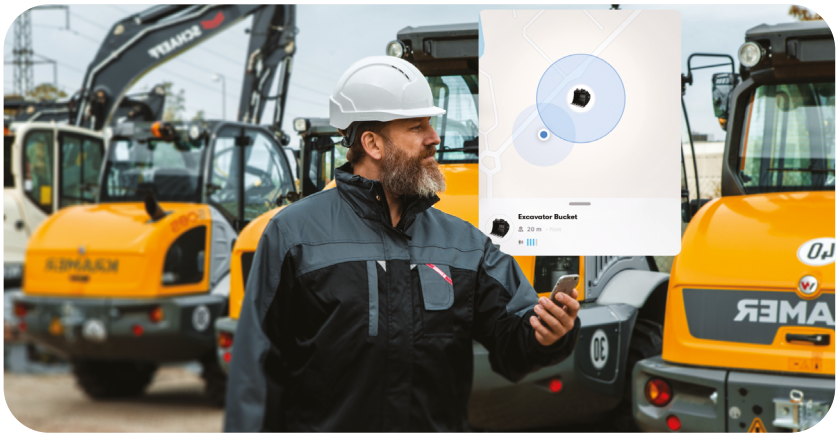


Power ON

With the GW200 powered on, it will automatically start its onboarding and activation using a cell connection. The status of the activation will be visible on the Go app or the Trackunit Manager web application.

Trackunit GW200

How to use Beam



Meet Trackunit GW200, a gateway that tracks all Kin tags and 3rd Party Bluetooth tags.

30%

30% of total annual tool purchases are due to theft, loss, and damages.

10%

An average worker spends 10% of their workday searching for tools and attachments.

21%

In 2016, only 21% of all stolen or lost equipment was recovered.

GW200 LED Behavior

| LED mode | LED color | Status indication |
|------------------------------|-----------|---|
| Constant Green Light | | -Battery is fully charged -Power Supply is ON |
| Constant Orange Light | | -Battery is currently being charged -Power Supply is ON |
| Green Blink every 15 seconds | | -Battery Power is being used -Power Supply is OFF |
| Red Blink every 15 seconds | | -Battery Power is being used -Battery voltage is low -Power Supply is OFF |
| Constant Red Light | | -Battery is currently being charged -Battery voltage is low -Power Supply is ON |

Help is here, whenever you need it.



Help Center

Installation, activation, and onboarding info can be found at help.trackunit.com



Customer Success

Please reach out to our experienced support team at support@trackunit.com



Order

Already know what you need? Place your order at trackunit.com