

Find the **accessories** you're looking for.



Raw Shield Mount

Made to protect Raw in harsh environments, adding an extra layer of protection.



Trackunit **GW100** Installation Guide



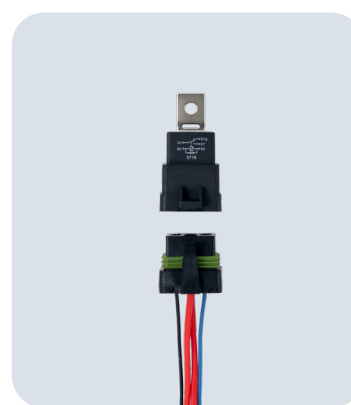
RFID Card Reader

USB RFID card reader is a easy tool to activate K300 RFID card and DualID RFID card access for operators.



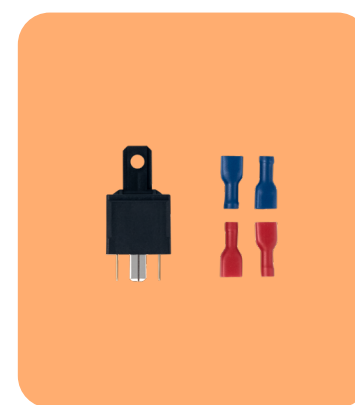
Trackunit RFID Cards

The RFID card is an easy way to control access to your equipment through the K300 or DualID.



Splash Proof Relay

Used when required, to interface Trackunit Raw to specific machine wiring signals or controls.



Standard Relays

Used when required, to interface Trackunit Raw to specific machine wiring signals or controls.



Ferrite

Designed and certified for use in Japan with and TU600 and TU700 models.



Power Cable

Versatile solutions to connect Trackunit Raw to any type of machine.



Keypad Bracket

Made to protect the K300 and DualID II in harsh environments by adding an extra layer of protection.

Help is here. Whenever and however you need it.



Help Center

Installation, activation, and onboarding info can be found at helpcenter.trackunit.com



Customer Success

Please reach out to our experienced support team at support@trackunit.com



Order

Already know what you need? Place your order at trackunit.com

Trackunit GW100

The Bluetooth Site Manager



Up to 400m Range

Your assets are always within reach of the GW100's long range.



Easy to Install

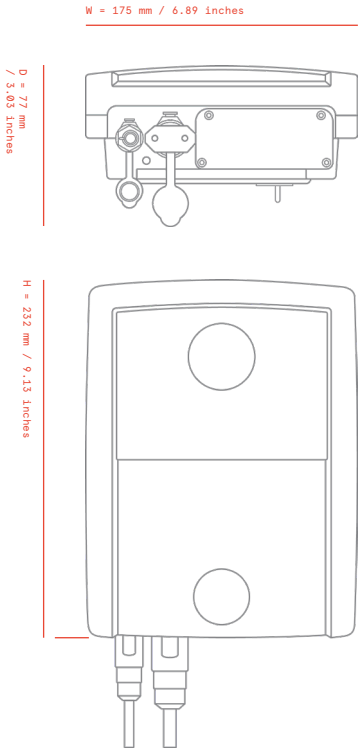
End-to-end installation validation via Trackunit Verify.



IP65

GW100 is durable and built to last outdoors or indoors with an IP65 classification.

Product Diagram



Overview

Trackunit GW100 is a gateway that can connect all bluetooth functionality and bring onsite tools into the IoT

Product Dimensions

- Height: 232 mm (9.13")
- Width: 175 mm (6.89")
- Depth: 77 mm (3.03") [with Mounting Plate]
- Weight: 1100 g (excluding battery)
- Battery: 585 g

Tech Specs

- Network: LTE-M, NB-IoT w/ 2G GSM
- Certification: CE,
- GPS: GPS, GLONASS, BeiDou, Galileo, QZSS
- AC Supply Voltage: 110V / 230V [50/60 Hz]
- DC Supply Voltage: 12 V +/-10%
- Battery Output: 10.8V, 7.8Ah, 84Wh
- Operating Temp.: -20°C to +60°C/-4°F to +140°F
- Charging Temp.: -20°C to +40°C/-4°F to +104°F
- Storage Temp.: 0°C to 25°C for best battery life
- Environmental Class: IP65
- Bluetooth 5.0 BLE

Included

- Trackunit GW100
- Battery
- Blind-plate
- Mains Cable (3m)
- Mounting Kit
- Installation & Safety Guides

Compatible With

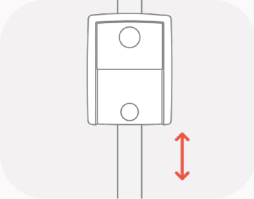


Installation

How to install GW100

1. Location

The GW100 can be powered using either 115/230 Vac or by battery power.



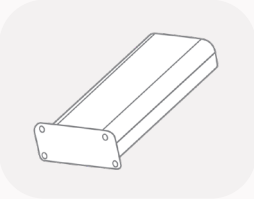
Mounting Location

Mount the bracket high up in a central location to utilize the GW100's large range of up to 400 m. Place the Beam with the serial number facing outwards, so you do not obstruct the LED Indicator on the bottom.



115/230 Vac Power Cable

The GW100 comes with a 3m long mains cable, so the mounting location should be within 3m of a power supply outlet, but less than 2m above the ground.

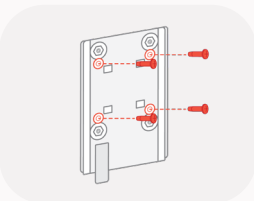


Battery

The Trackunit GW100 has a battery option to allow for use in isolated construction zones. The GW100 has up to 10 days of operation time on an average number of pings.

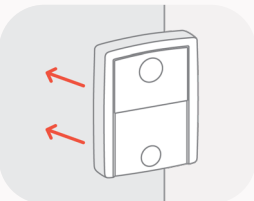
2. Mounting the Bracket

There are 3 different ways to mount the Trackunit GW100



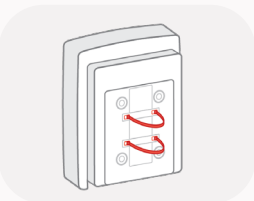
Screws

There are 4 mounting screw holes in the back of the bracket to allow the Trackunit GW100 to be screwed onto a wall. Minimum screw length must be 16mm.



Magnet

Install the Trackunit GW100 Bracket on any magnetic surface and the powerful magnets will hold firm, even in harsh weather and rain.

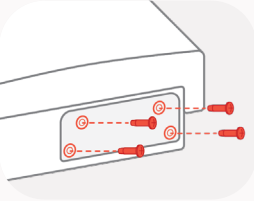


Ziptie

The Trackunit GW100 Bracket includes sections that allow for zip ties to easily be threaded through to allow for further mounting if no metal surface is usable.

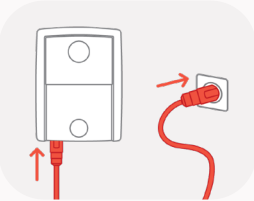
3. Activating the GW100

The GW100 will activate on the initial power on.



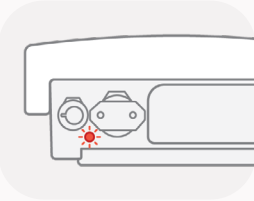
Connecting the Battery

The Trackunit GW100 has a pre-charged battery pack that needs to be inserted. There are 4 screws included to hold the battery in place.



Connecting the Cable

Using the 3 meter cable included, plug the Trackunit GW100 into a mains power supply outlet.

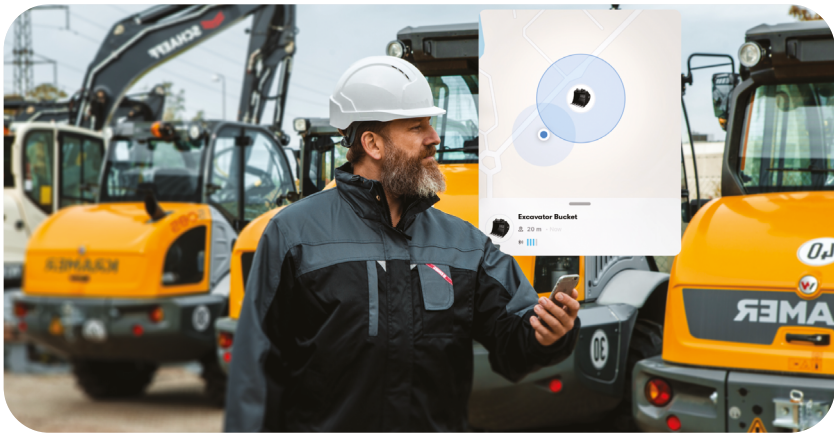


Power ON

With the GW100 powered on, it will automatically start it's onboarding and activation using a cell connection. The status of the activation will be visible on the GoManager app or the Trackunit Manager website.

Trackunit GW100

How to use GW100



Meet Trackunit GW100, a gateway that tracks all Kin tags and 3rd Party Bluetooth tags.

30%

30% of total annual tool purchases are due to theft, loss, and damages.

10%

An average worker spends 10% of their workday searching for tools and attachments.

21%

In 2016, only 21% of all stolen or lost equipment was recovered.

GW100 LED Behavior

LED mode	LED color	Status indication
Constant Green Light		-Battery is fully charged -Power Supply is ON
Constant Orange Light		-Battery is currently being charged -Power Supply is ON
Green Blink every 15 seconds		-Battery Power is being used -Power Supply is OFF
Red Blink every 15 seconds		-Battery Power is being used -Battery voltage is low -Power Supply is OFF
Constant Red Light		-Battery is currently being charged -Battery voltage is low -Power Supply is ON

Help is here, whenever you need it.



Help Center

Installation, activation, and onboarding info can be found at helpcenter.trackunit.com



Customer Success

Please reach out to our experienced support team at support@trackunit.com



Order

Already know what you need? Place your order at trackunit.com